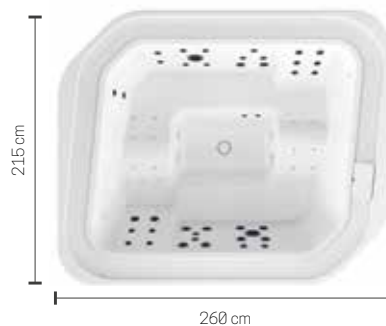


# MOON 215x260



Dimensions cm 215 x 260 H 93

Seats

Capacity Lt. 1550

Absorption Max Watt 4500

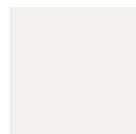
Max. weight kg 2620

## FUNCTIONS

## PLUS

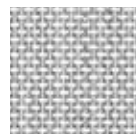
Whirlpool jets	41
Whirlpool mini jets	12
UV purification system	●
White LED light	●
Chromolight	OPTIONAL
Bluetooth sound system	OPTIONAL
Wi-Fi module	OPTIONAL
Double speed pump	●
Recirculation pump	●
Heater 3 kW	●
Heat exchanger	OPTIONAL
Automatic refill	●
Compensation tank	●
Quick emptying	●
Sand filter	●
Direct start button hydro	OPTIONAL

## BATHTUB FINISH

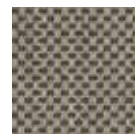


A0 White

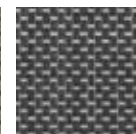
## PANELS FIBER-CROSS



T1 Light grey



T2 Warm brown

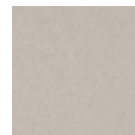


T3 Steel

## CLAY PANELS



R Cenere



O Polvere



S Tortora

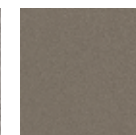
## NATURAL TOUCH PANELS



P1 Oak Alpine



P2 Oak Concrete



P3 Oxid



P4 Quarz

## THERMAL COVER

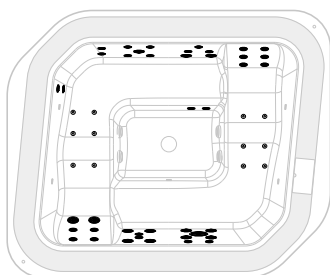


C2 Brown



C1 Plenty Grey

## MOON PLUS



Code	Functions		Bathtub Colour
	UV + LED white	UV + Chromolight + audio BT + Hydro button	

White

PLUS			
	<b>0X1</b>	<b>6X1</b>	<b>-W10K</b>
<b>MOON40</b>			

PLUS WITH HEAT EXCHANGER			
	<b>0R1</b>	<b>6R1</b>	<b>-W10K</b>
<b>MOON40</b>			

## PANELS

Code	Panels finishes			
<b>NATURAL TOUCH PANELS</b>				
	<b>P1</b>	<b>P2</b>	<b>P3</b>	<b>P4</b>
	Oak-Alpine	Oak-Concrete	Oxid	Quarz
<b>PANV2F2LM00-</b>				
<b>CLAY PANELS</b>				
	<b>R</b>	<b>O</b>	<b>S</b>	
	Cenere	Polvere	Tortora	
<b>PANV2F2LM00-</b>				
<b>FIBER-CROSS PANELS</b>				
	<b>T1</b>	<b>T2</b>	<b>T3</b>	
	Light Grey	Warm Brown	Steel	
<b>PATV2F2LM00-</b>				

## OPTIONAL

### WI-FI MODULE

Code	Price
<b>DOMOWF</b>	

### HEAT PUMP PREDISPOSITION KIT

Code	Price
<b>DOKPDC</b>	

### INSULATION KIT

Thermal insulation	Code	Price
Panels	<b>KBT2F2LM00</b>	
Bathtub bottom	<b>MOTHCOFV</b>	

### THERMAL COVER

Cover	Code	Price	
		C1	C2
Summer cover	<b>MOTHCO-</b>		
Winter cover	<b>MOTHCOT-</b>		

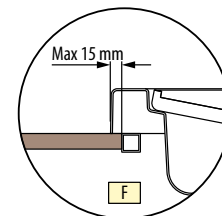
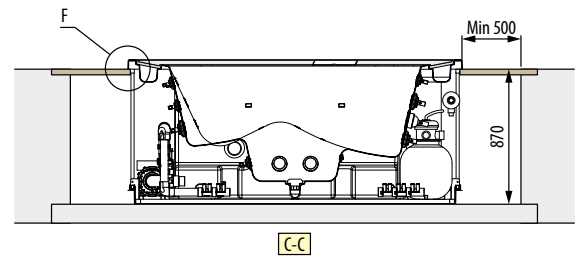
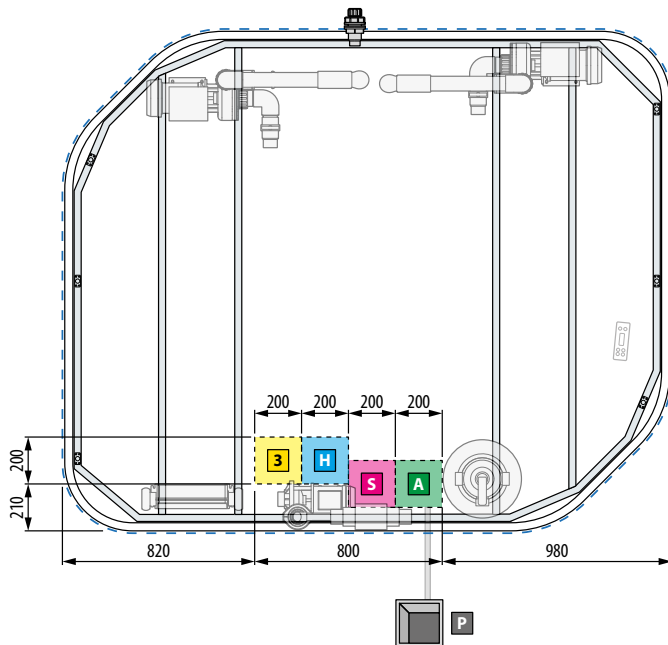
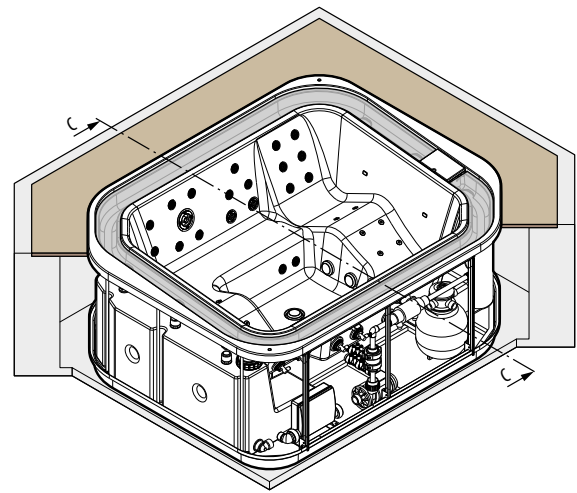
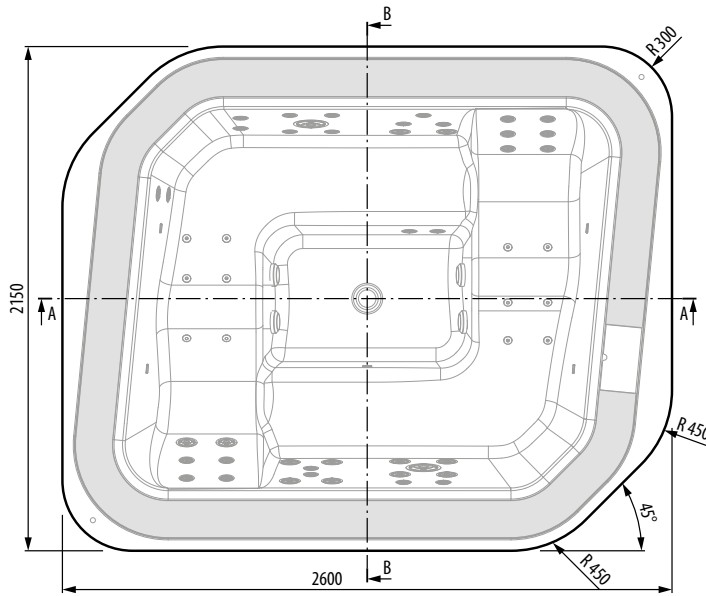
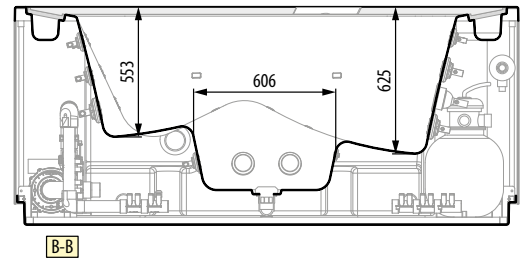
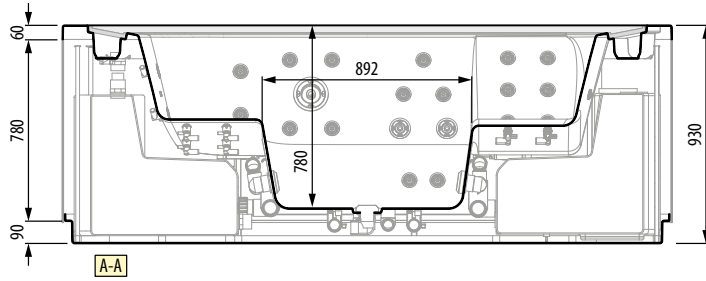
Plenty Grey

Brown

Code composition = **Code** + **Functions** + **Bathtub Colour**

TECHNICAL DATA

MOON



**HYDRAULIC SPECIFICATIONS**  
 Average capacity 1550 litres  
 37 whirlpool  
 16 mini jet

**ELECTRICAL SPECIFICATIONS**  
 Power 230 V  
 Frequency 50 Hz  
 Max. power requirement 4500 W

**MECHANICAL CHARACTERISTICS**  
 Total area 4.85 m<sup>2</sup>  
 Total weight: 2620 kg  
 Bathtub+components mass 450 kg  
 Users mass (6 pers.) 80x6=480 kg  
 Specific load on support base 5290 N/m<sup>2</sup>