

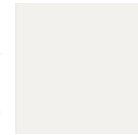
VITA XXL 215x215



Dimensions cm	215 x 215 H 85
Seats	6
Capacity Lt.	1150
Absorption Max Watt	3450 / 4050
Max. weight kg	1980

FUNCTIONS	STANDARD	PLUS
Whirlpool jets	24	34
Whirlpool mini jets	8	12
Air regulation	-	2
UV purification system	●	●
Chromolight	1	2
Headrest	-	●
Bluetooth audio system	OPTIONAL	OPTIONAL
Wi-Fi module	OPTIONAL	OPTIONAL
Double speed pump	●	●
Single speed pump	-	●
Heater 3 kW	●	●
Heat exchanger	OPTIONAL	OPTIONAL
Automatic refill	OPTIONAL	OPTIONAL
Fast emptying/filling + level control	OPTIONAL	OPTIONAL
Skimmer cover	-	●

BATHTUB COLOUR



A0 White

HEADREST



H Black

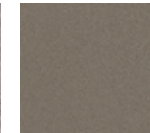
NATURAL TOUCH PANELS



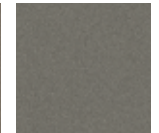
P1 Oak Alpine



P2 Oak Concrete



P3 Oxid



P4 Quarz

SLATTED PANELS



D1 Dark brown



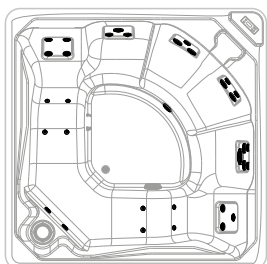
D2 Ice

THERMAL COVER

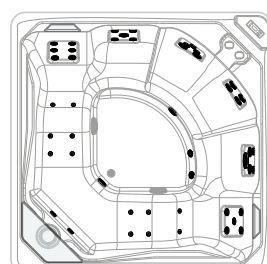


C2 Brown

VITA XXL STANDARD



VITA XXL PLUS



Code	Functions		Level control options			Bathtub Colour	Headrest/Side Seat Colour
	UV + Chromolight	UV + Chromolight + audio BT	None	Automatic refill	Fast emptying/ filling + level control		
						White	Black
STANDARD							
	3X	4X	0	1	2	-W10	H
VITXXL50							
STANDARD WITH HEAT EXCHANGER							
	3R	4R	0	1	2	-W10	H
VITXXL50							
PLUS							
	3X	4X	0	1	2	-W10	H
VITXXL40							
PLUS WITH HEAT EXCHANGER							
	3R	4R	0	1	2	-W10	H
VITXXL40							

PANELS

Code	Panels finishes			
NATURAL TOUCH				
	P1	P2	P3	P4
	Oak-Alpine	Oak-Concrete	Oxid	Quarz
PANV2F2LVITXXL-				
SLATTED PANELS				
	D1	D2		
	Dark Brown	Ice		
PADV2F2LVITXXL-				

OPTIONAL

WI-FI MODULE

Code	Price
DOMOWF	

HEAT PUMP PREDISPOSITION KIT

Code	Price
DOKPDC	

INSULATION KIT

Insulation	Code	Price
Panels	KBT2F2LVIXXL	
Bathtub bottom	VXXTHCOFV	

THERMAL COVER

Cover	Code	Price
		Brown
Summer cover	VXXTHCO-C2	
Winter cover	VXXTHCOT-C2	

Code composition

Code

+

Functions

+

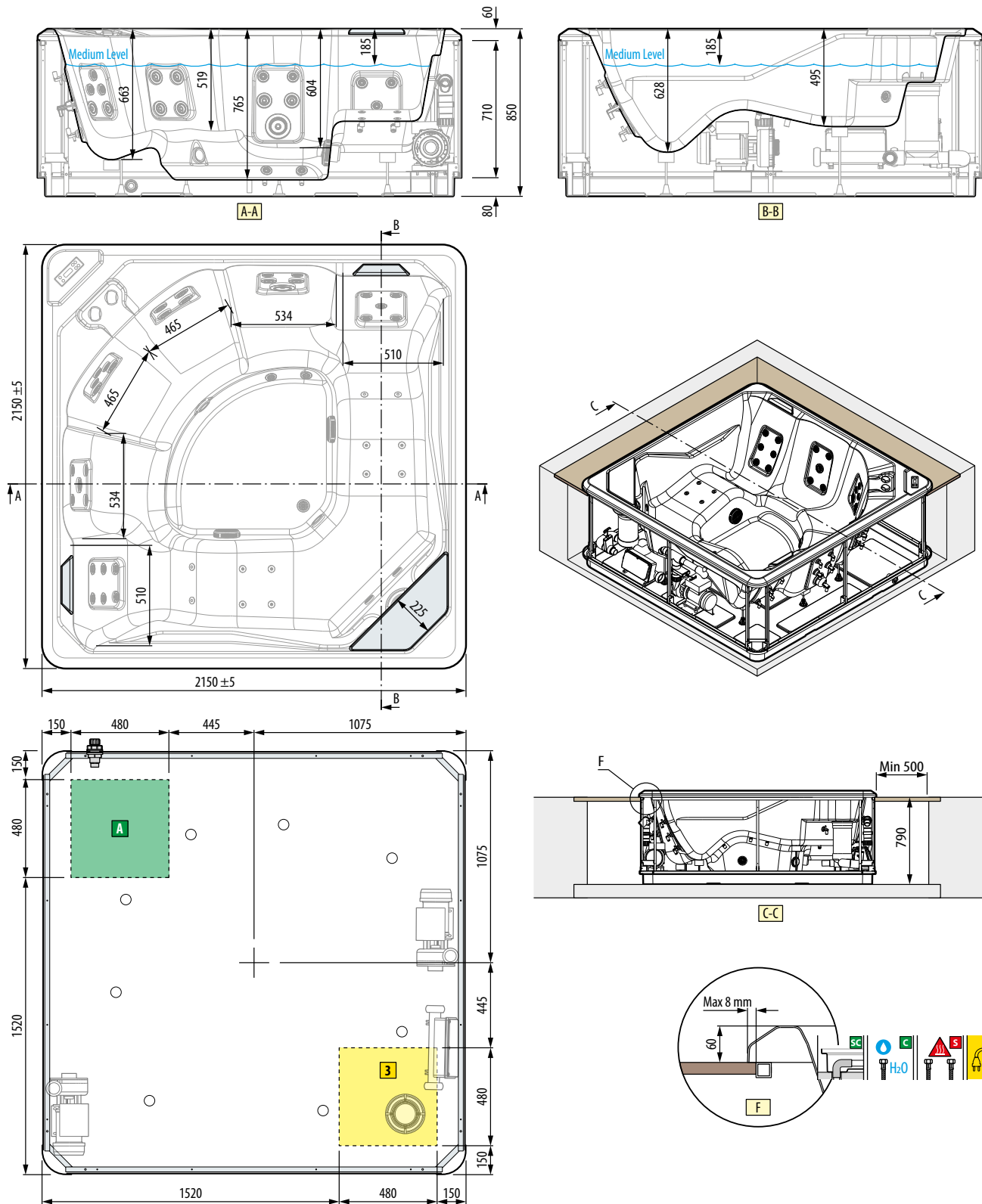
Level control options

+

Bathtub Colour

+

Headrest/Side Seat Colour



HYDRAULIC SPECIFICATIONS

Maximum capacity 1150 litres
 34 side whirlpool jets (24 vers. st.)
 12 mini jets on the bottom (8 vers. st.)

ELECTRICAL SPECIFICATIONS

Power 230 V
 Frequency 50 Hz
 Max. power requirement 4050 W (plus)
 Max. power requirement 3450 W (stand.)

MECHANICAL CHARACTERISTICS

Total area 4.6 m²
 Total weight: 1980 kg
 Bathtub+components mass 350 kg
 Users mass (6+1 pers.) 80x6=480 kg
 Specific load on support base 4280 N/m²