

# STAR 2.0 3P



195 cm



3 mm



6 cm

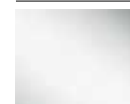


## PORTA DOCCIA APERTURA 3 ANTE SCORREVOLI BILATERALE DA DESTRA E DA SINISTRA

Installabile in nicchia o abbinabile ad 1 o 2 pareti fisse laterali STAR F



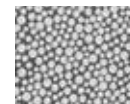
### FINITURE VETRI



Trasparente  
cod 1



Niva  
cod 11



Ser. Punto  
cod 38



Circolare  
cod 43

### FINITURE PROFILI



Bianco  
cod A



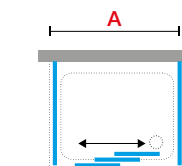
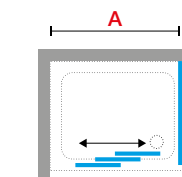
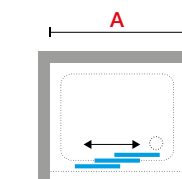
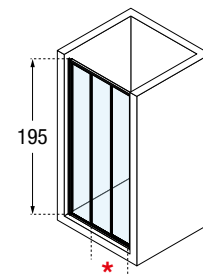
Silver  
cod B

| Misure                         |                 | Codice            | Scelta vetro |      |                     | Scelta profilo |        | Scelta<br>acrilico | Scelta profilo |        |
|--------------------------------|-----------------|-------------------|--------------|------|---------------------|----------------|--------|--------------------|----------------|--------|
| Misura effettiva<br>d'ingombro | Entrata<br>(cm) |                   | 1            | 11   | 38                  | A              | B      |                    | 43             | A      |
| <b>A</b>                       | *               |                   | Trasparente  | Niva | Serigrafia<br>punto | Bianco         | Silver | Circolare          | Bianco         | Silver |
| 78↔84                          | 43              | <b>STA23P78-</b>  |              |      |                     |                |        |                    |                |        |
| 84↔90                          | 47              | <b>STA23P84-</b>  |              |      |                     |                |        |                    |                |        |
| 90↔96                          | 51              | <b>STA23P90-</b>  |              |      |                     |                |        |                    |                |        |
| 96↔102                         | 55              | <b>STA23P96-</b>  |              |      |                     |                |        |                    |                |        |
| 102↔108                        | 59              | <b>STA23P102-</b> |              |      |                     |                |        |                    |                |        |
| 108↔114                        | 63              | <b>STA23P108-</b> |              |      |                     |                |        |                    |                |        |
| 114↔120                        | 67              | <b>STA23P114-</b> |              |      |                     |                |        |                    |                |        |

### PORTE SPECIALI IN ALTEZZA

H 140↑200  
L 66↔114

**STA23PSP**



**POSSIBILITÀ DI ORDINARE UN PANNELLO FISSO LATERALE PER AVERE 3 LATI**



## DATI TECNICI

### FINITURE PROFILI



Bianco  
cod. A



Silver  
cod. B

### VETRO TEMPRATO 3, 4, 5 mm (European Standards EN 14428)

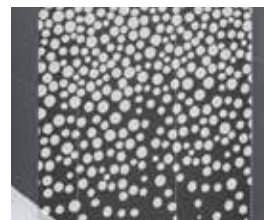


Trasparente  
cod. 1



Niva  
cod. 11

### SERIGRAFIA



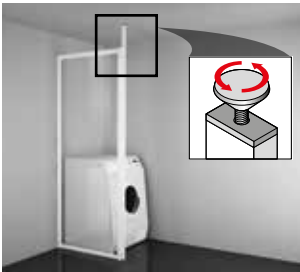
Punto  
cod. 38

### ACRILICO 3 mm



Circolare  
cod. 43

### OPTIONAL

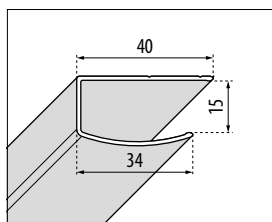


**PROFILO A SOFFITTO**

- Profilo speciale per fissaggio a soffitto da abbinare allo NSTARF5SP

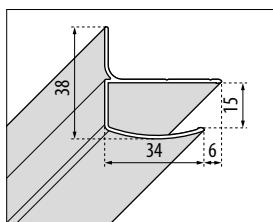
| Finitura | Misure      | Codice         | Prezzo |
|----------|-------------|----------------|--------|
| Bianco   | H 180 ↓ 265 | <b>SPA3102</b> |        |
| Silver   | H 180 ↓ 265 | <b>SPA3102</b> |        |

### MISURE DI INGOMBRO PROFILI DI FISSAGGIO



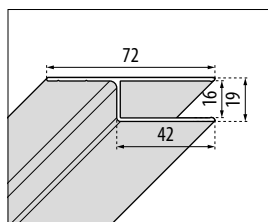
**A MURO**  
A - R - F

| Finitura | Codice             |
|----------|--------------------|
| Bianco   | <b>P01HAAST3-A</b> |
| Silver   | <b>P01HAAST3-B</b> |



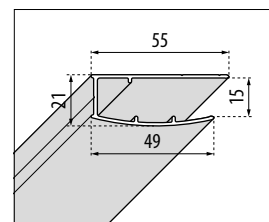
**A MURO**  
2P - 3P - G - B - S

| Finitura | Codice              |
|----------|---------------------|
| Bianco   | <b>P01HAPCST3-A</b> |
| Silver   | <b>P01HAPCST3-B</b> |



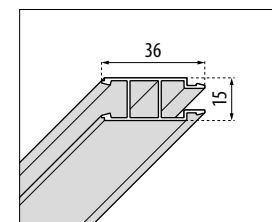
**A MURO**  
profilo a muro laterale  
tutti i modelli

| Finitura | Codice              |
|----------|---------------------|
| Bianco   | <b>P01L215STL-A</b> |
| Silver   | <b>P01L215STL-B</b> |



**COMPENSAZIONE**  
tutti i modelli

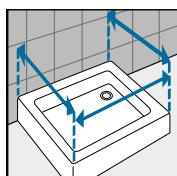
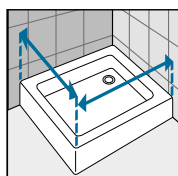
| Finitura | Codice             |
|----------|--------------------|
| Bianco   | <b>P01SACST3-A</b> |
| Silver   | <b>P01SACST3-B</b> |



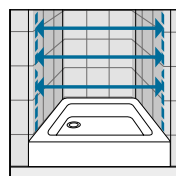
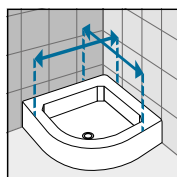
**COMPENSAZIONE**  
per modello A

| Finitura | Codice             |
|----------|--------------------|
| Bianco   | <b>P05HAAST3-A</b> |
| Silver   | <b>P05HAAST3-B</b> |

### COME RILEVARE LE MISURE



Rilevare le misure da muro a bordo esterno del piatto doccia. Le misure devono essere rilevate sulla parete finita, a rivestimenti posati, secondo gli schemi riportati.



Rilevare le misure da muro a muro, in basso, in alto, al centro e utilizzare quella di valore inferiore. Le misure devono essere rilevate sulla parete finita, a rivestimenti posati, secondo gli schemi riportati.