

STAR 2.0 2P



195 cm



3 mm



6 cm



PORTA DOCCIA, APERTURA 1 ANTA SCORREVOLE E 1 ANTA FISSA IN LINEA, IN NICCHIA

Installabile in nicchia o abbinabile ad 1 o 2 pareti fisse laterali STAR F



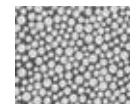
FINITURE VETRI



Trasparente
cod 1



Niva
cod 11



Ser. Punto
cod 38



Circolare
cod 43

FINITURE PROFILI

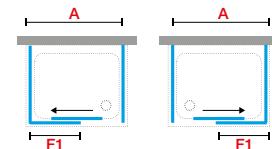
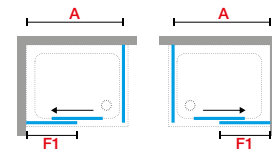
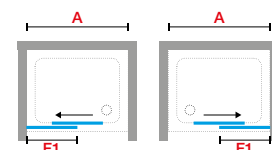
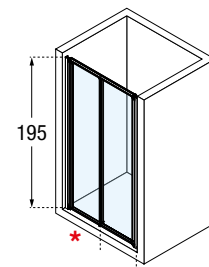


Bianco
cod A



Silver
cod B

Misure			Codice	Scelta vetro			Scelta profilo		Scelta acrilico	Scelta profilo	
Misura effettiva d'ingombro	Fisso	Entrata (cm)		1	11	38	A	B	43	A	B
A	F1	*		Trasparente	Niva	Serigrafia punto	Bianco	Silver	Circolare	Bianco	Silver
96↔102	47	39	STA22P96-								
102↔108	50	42	STA22P102-								
108↔114	53	45	STA22P108-								
114↔120	56	48	STA22P114-								
120↔126	59	51	STA22P120-								
126↔132	62	54	STA22P126-								
132↔138	65	57	STA22P132-								
138↔144	68	60	STA22P138-								
144↔150	71	63	STA22P144-								
150↔156	74	66	STA22P150-								
156↔162	77	69	STA22P156-								
PORTE SPECIALI IN ALTEZZA											
H 140↔200			STA22P2SP								



POSSIBILITÀ DI ORDINARE UN PANNELLO FISSO LATERALE PER AVERE 3 LATI

DATI TECNICI

FINITURE PROFILI



Bianco
cod. A



Silver
cod. B

VETRO TEMPRATO 3, 4, 5 mm (European Standards EN 14428)

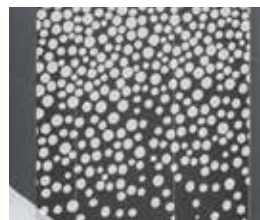


Trasparente
cod. 1



Niva
cod. 11

SERIGRAFIA



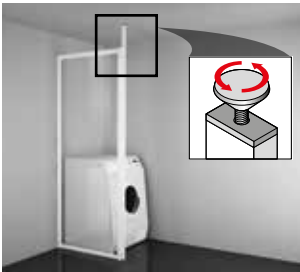
Punto
cod. 38

ACRILICO 3 mm



Circolare
cod. 43

OPTIONAL

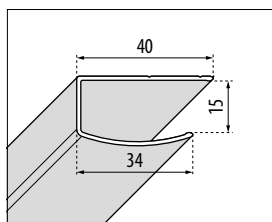


PROFILO A SOFFITTO

- Profilo speciale per fissaggio a soffitto da abbinare allo NSTARF5SP

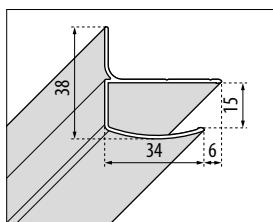
Finitura	Misure	Codice	Prezzo
Bianco	H 180 ↓ 265	SPA3102	
Silver	H 180 ↓ 265	SPA3102	

MISURE DI INGOMBRO PROFILI DI FISSAGGIO



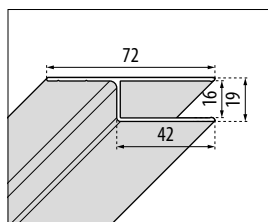
A MURO
A - R - F

Finitura	Codice
Bianco	P01HAAST3-A
Silver	P01HAAST3-B



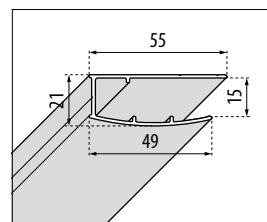
A MURO
2P - 3P - G - B - S

Finitura	Codice
Bianco	P01HAPCST3-A
Silver	P01HAPCST3-B



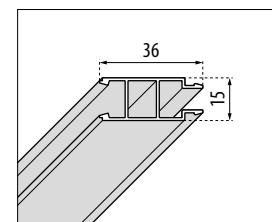
A MURO
profilo a muro laterale
tutti i modelli

Finitura	Codice
Bianco	P01L215STL-A
Silver	P01L215STL-B



COMPENSAZIONE
tutti i modelli

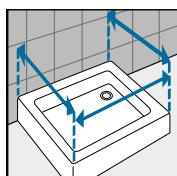
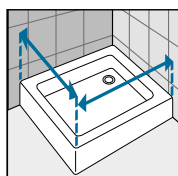
Finitura	Codice
Bianco	P01SACST3-A
Silver	P01SACST3-B



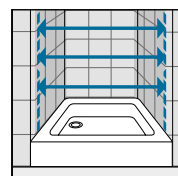
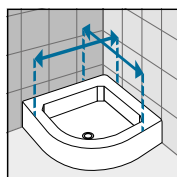
COMPENSAZIONE
per modello A

Finitura	Codice
Bianco	P05HAAST3-A
Silver	P05HAAST3-B

COME RILEVARE LE MISURE



Rilevare le misure da muro a bordo esterno del piatto doccia. Le misure devono essere rilevate sulla parete finita, a rivestimenti posati, secondo gli schemi riportati.



Rilevare le misure da muro a muro, in basso, in alto, al centro e utilizzare quella di valore inferiore. Le misure devono essere rilevate sulla parete finita, a rivestimenti posati, secondo gli schemi riportati.