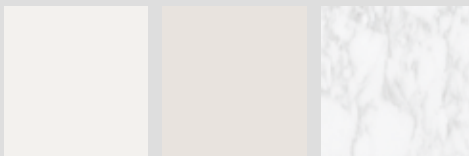




DIVINA XXL SPA | FINISHES

BATHTUB FINISH

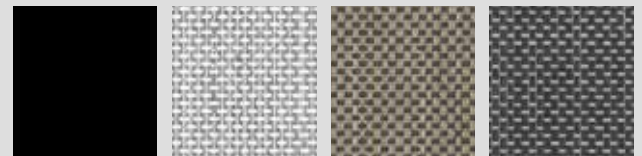


White

Perla

Marmo chiaro

SEAT AND HEADREST



Black

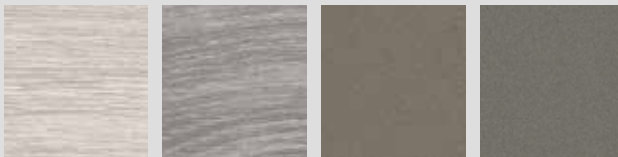
Light grey

Warm brown

Steel

Fiber-Cross

NATURAL TOUCH PANELS



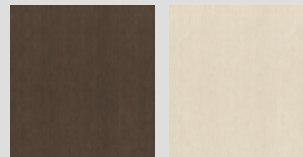
Oak Alpine

Oak Concrete

Oxid

Quarz

SLATTED PANELS



Dark brown

Ice

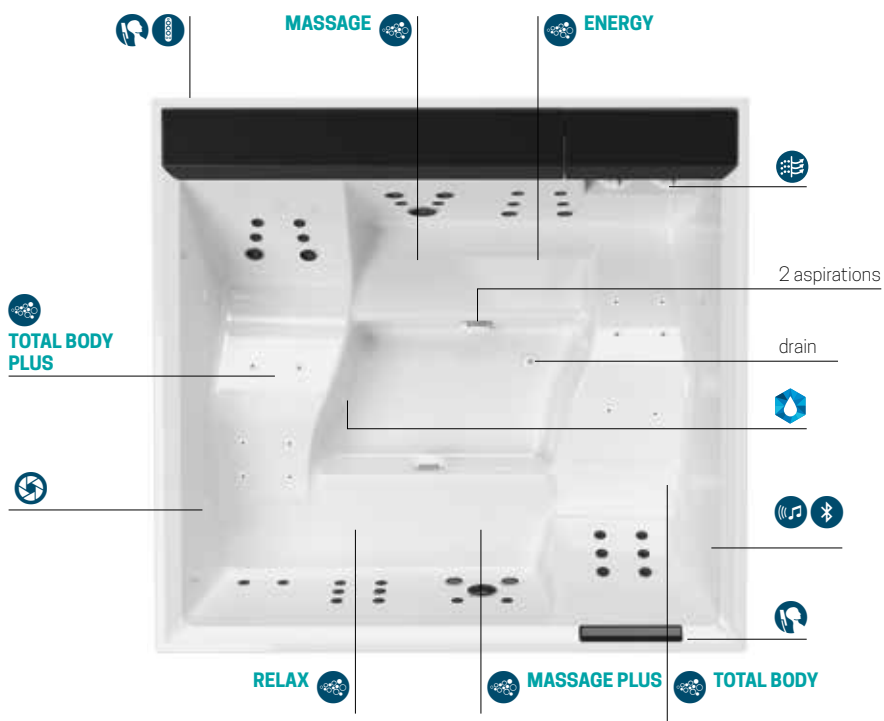
FIBER-CROSS PANELS



Light grey

Warm brown

Steel



Airpool massage with manual on/off switch. For effective cell stimulation.



Whirlpool air/water body massage with manual or automatic time and intensity adjustment. To satisfy all wellness needs.



Water filter skimmer



Aquaclean UV+Ozone



4 Cromolight with 8 colour variations to activate the mind and excite the spirit.



Control panel



Headrest made of antibacterial material.



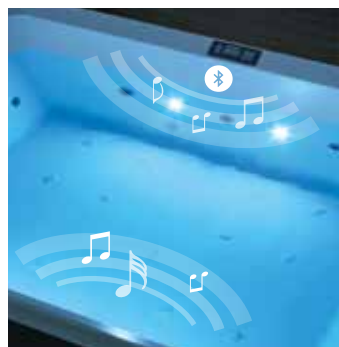
Seat with drain control



Bluetooth audio speakers
4 internal and 4 external



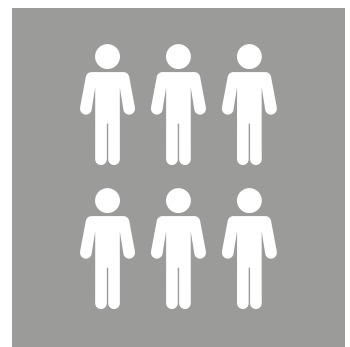
Control panel



Chromolight and audio system



Aquaclean water purification system



6 seater bathtub



DIVINA XXL SPA

DIVINA XXL SPA

MULTIFUNCTIONAL MINIPOOL 230x215x85 - 1160 litres

Dimensions cm 230 x 215 H 85

Seats 6

Capacity Lt. 1160

Code	Function/Price				Filling choice		Bathtub Colour			Headrest/Side Seat Colour			
	Standard + White LED Light	Aquaclean + White Led lights	Cromolight + Bluetooth audio	Aquaclean + Cromolight + Bluetooth audio	WITHOUT automatic filling	WITH automatic filling							
							White	Perla	Marmo chiaro	Black	Light Grey	Warm Brown	Steel
STANDARD													
	0X	8X	6X	9X	0	1	-W10	-W20	-W30	H	T1	T2	T3
DOXXL50													
STANDARD WITH HEAT EXCHANGER													
	0R	8R	6R	9R	0	1	-W10	-W20	-W30	H	T1	T2	T3
DOXXL50													
PLUS													
	0X	8X	6X	9X	0	1	-W10	-W20	-W30	H	T1	T2	T3
DOXXL40													
PLUS WITH HEAT EXCHANGER													
	0R	8R	6R	9R	0	1	-W10	-W20	-W30	H	T1	T2	T3
DOXXL40													

Code construction **Code** + **Function** + **Bathtub Colour** + **Headrest/Side Seat Colour** = Final product code

PANELS

Code	Select the panels/Price			
NATURAL TOUCH PANELS				
	P1	P2	P3	P4
	Oak-Alpine	Oak-Concrete	Oxid	Quarz
PANV2F2LDIVDXX-				
SLATTED PANELS				
	D1	D2		
	Dark Brown	Ice		
PADV2F2LDIVDXX-				
FIBER-CROSS PANELS				
	T1	T2	T3	
	Light Grey	Warm Brown	Steel	
PATV2F2LDIVDXX-				

124 Code construction **Code** + **Select the panels finishing** = Final product code

FEATURES	STANDARD	PLUS
whirlpool mini jets	8	16
whirlpool jets	24	36
4 White LED light	●	●
4 Chromolight	OPTIONAL	OPTIONAL
Headrest	-	●
Integrated audio system + Bluetooth	OPTIONAL	OPTIONAL
Wi-Fi module	OPTIONAL	OPTIONAL
Aquaclean purification system (UV+ozone)	OPTIONAL	OPTIONAL
UV purification system	●	●
Single speed pump	-	●
Double speed pump	●	●
Heater 3 kW	●	●
Heat exchanger	OPTIONAL	OPTIONAL
Automatic filling	OPTIONAL	OPTIONAL

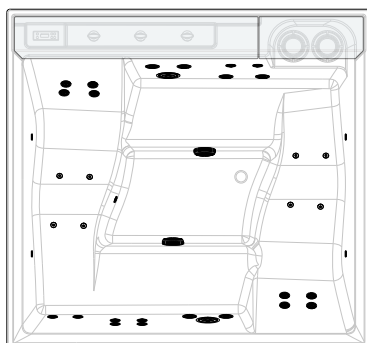
WI-FI MODULE	
Code	Price
DOMOWF	

BATHTUB BOTTOM INSULATION KIT	
Code	Price
DXXTHCOFV	

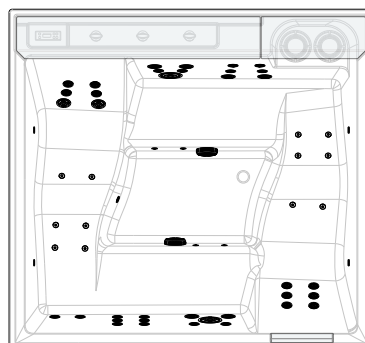
PANEL INSULATION KIT	
Code	Price
KBT2F2LDOXXL	

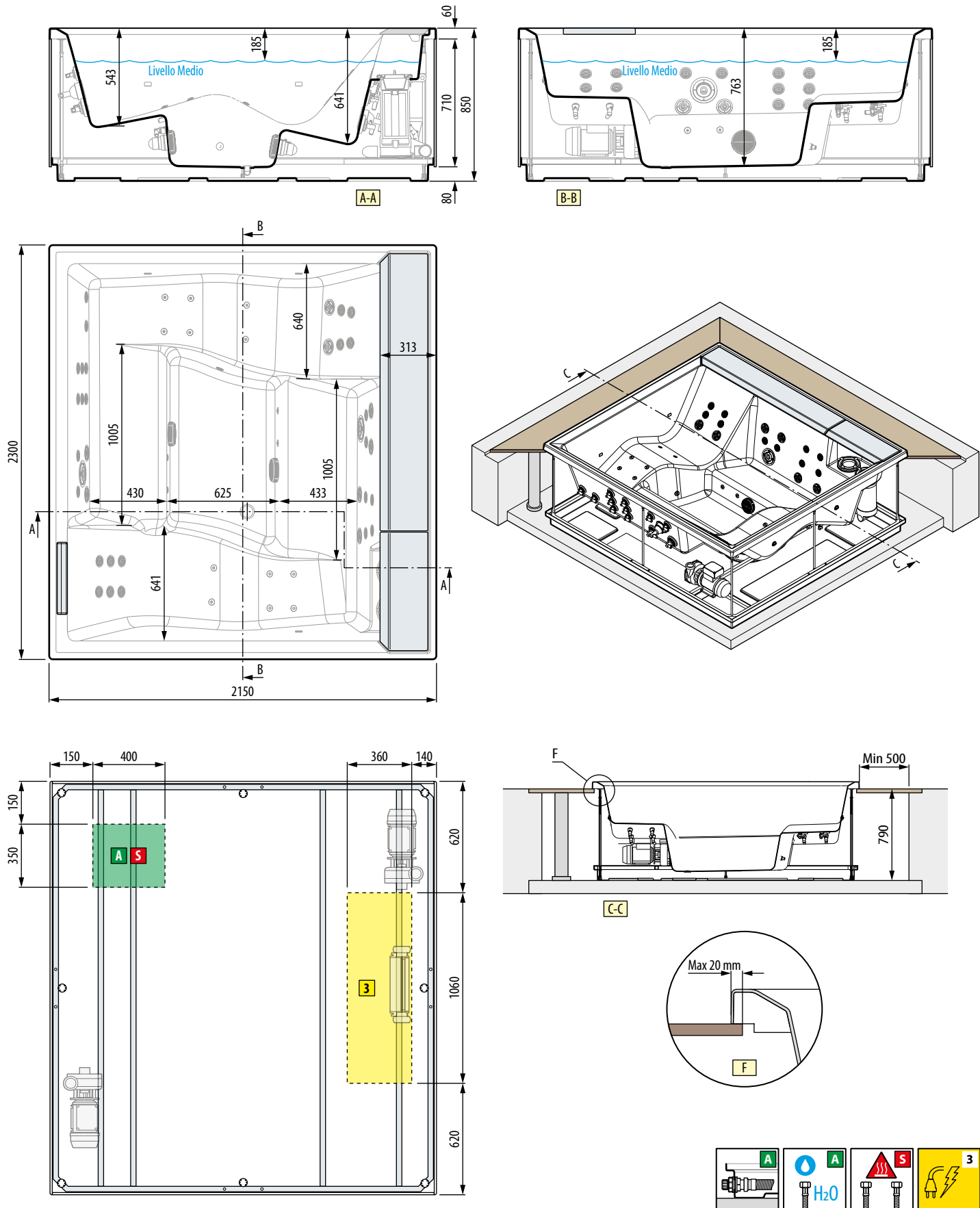
THERMAL COVER			
Insulation	Code	Price	
		C1	C2
		Plenty Grey	Brown
Summer coverage	DXXTHCO-		
Winter coverage	DXXTHCOT-		

STANDARD VERSION



PLUS VERSION





HYDRAULIC SPECIFICATIONS

average capacity 1160 litres
 36 whirlpool (24 standard version)
 16 mini jet (8 standard version)

ELECTRICAL SPECIFICATIONS

Power 230 V
 Frequency 50 Hz
 Max. power requirement 4050 W (plus)
 Max. power requirement 3450 W (stand.)

MECHANICAL CHARACTERISTICS

Total area 4.9 m²
 Total weight: 2080 kg
 Bathtub+components mass 440 kg
 Users mass (6 pers.) 80x6=480 kg
 Specific load on support base 4210 N/m²