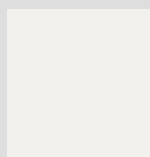




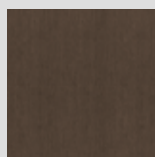
DIVINA M SPA | FINITURE

VASCA

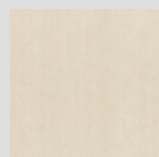


Bianco

PANNELLI DOGATI

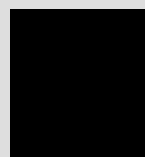


Dark brown

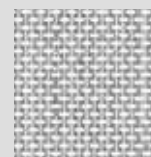


Ice

SEDUTA E POGGIATESTA



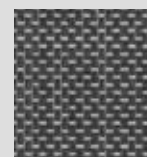
Nero



Light grey



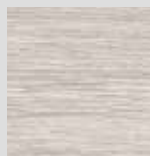
Warm brown



Steel

Fiber-Cross

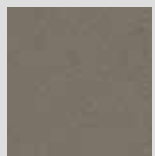
PANNELLI NATURAL TOUCH



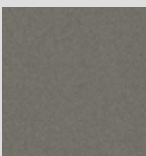
Oak Alpine



Oak Concrete

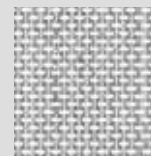


Oxid



Quarz

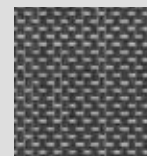
PANNELLI FIBER-CROSS



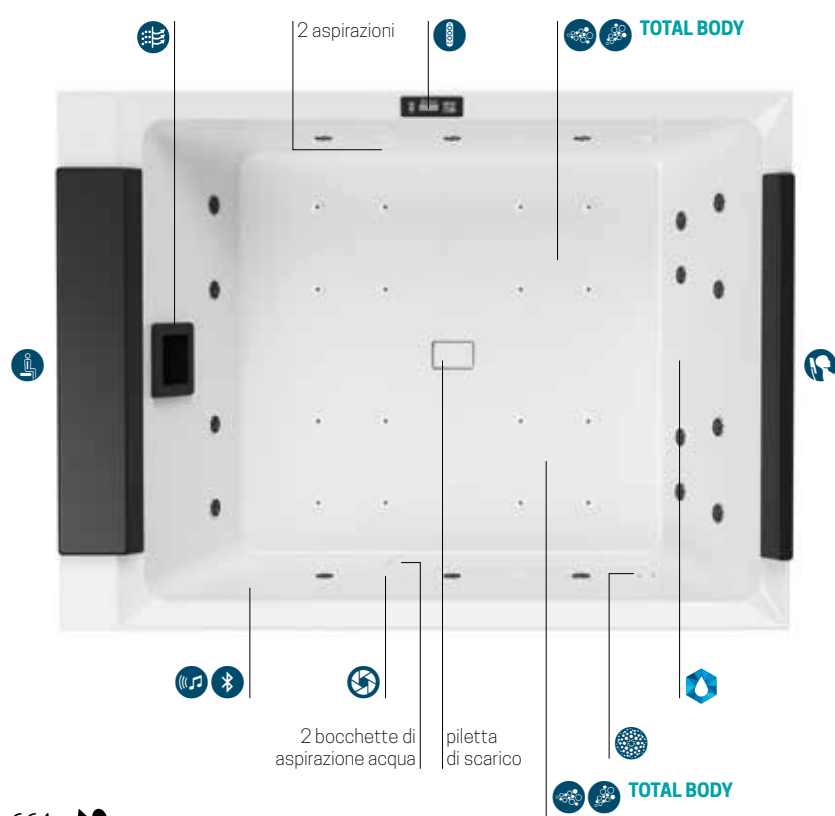
Light grey



Warm brown



Steel



Massaggio Airpool a getto d'aria con accensione manuale on/off. Per una **efficace stimolazione cellulare**.



Massaggio corpo Whirlpool aria/acqua con regolazione di tempo e intensità manuale o automatica. Per soddisfare qualsiasi esigenza di benessere.



Skimmer filtro acqua



Aquaclean UV+Ozono



2 Natural air



4 Cromolight con 8 variazioni cromatiche per attivare la mente ed emozionare lo spirito.



Pannello di controllo



Poggiatesta in materiale antibatterico.



Seduta con comando piletta



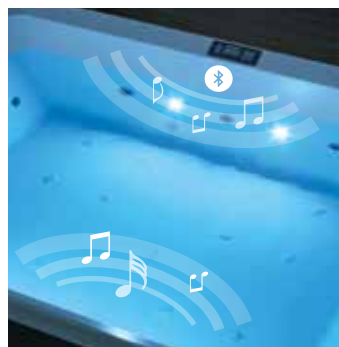
Diffusori audio bluetooth
2 interni e 2 esterni



VASCA BIANCO MORBIDO CON LUCE LED ESTERNA



Pannello di controllo



Sistema cromolight e audio



Natural Air



Sistema di purificazione acqua Aquaclean



DIVINA M SPA

DIVINA M SPA

MINIPISCINA MULTIFUNZIONE 190x140x75 - 500 litri

Dimensioni cm 190 x 140 H 75

Posti 2

Capacità Lt. 550

Codice	Scelta funzioni/Prezzo						Scelta riempimento		Colori Vasca	Colori sedile e poggiatesta			
	Standard + luci led bianche	UV + luci led bianche	Aquaclean + luci led bianche	Cromolight + audio Bluetooth	UV + Cromolight + audio Bluetooth	Aquaclean + Cromolight + audio Bluetooth	SENZA Riempimento Automatico	CON Riempimento Automatico		Bianco Lucido	Nero	Light Grey	Warm Brown

STANDARD

	0X	3X	8X	6X	4X	9X	0	1	-A0	H	T1	T2	T3
DOM50													

STANDARD CON SCAMBIATORE DI CALORE

	0R	3R	8R	6R	4R	9R	0	1	-A0	H	T1	T2	T3
DOM50													

PLUS

	0X	3X	8X	6X	4X	9X	0	1	-A0	H	T1	T2	T3
DOM40													

PLUS CON SCAMBIATORE DI CALORE

	0R	3R	8R	6R	4R	9R	0	1	-A0	H	T1	T2	T3
DOM40													

PLUS+NATURAL AIR

	0X	3X	8X	6X	4X	9X	0	1	-A0	H	T1	T2	T3
DOMPO													

PLUS+NATURAL AIR CON SCAMBIATORE DI CALORE



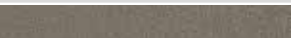
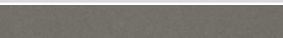
	0R	3R	8R	6R	4R	9R	0	1	-A0	H	T1	T2	T3
DOMPO													

Costruzione del codice **Codice** + **Scelta funzioni** + **Colore vasca** + **Colore seduta poggiatesta** = Codice prodotto finale

PANNELLI

Codice	Scelta finitura pannelli/prezzo			
--------	---------------------------------	--	--	--

PANNELLI NATURAL TOUCH

	P1	P2	P3	P4
				
	Oak-Alpine	Oak-Concrete	Oxid	Quarz

PANV2F2LDIVDO-

PANNELLI DOGATI

	D1	D2
		
	Dark Brown	Ice

PADV2F2LDIVDO-

PANNELLI FIBER-CROSS

	T1	T2	T3
			
	Light Grey	Warm Brown	Steel

PATV2F2LDIVDO-

FUNZIONI	STANDARD	PLUS	PLUS+NATURAL AIR
Whirlpool jets	18	18	18
Whirlpool mini jets	-	16	16
Natural Air	-	-	2
Sistema di purificazione Aquaclean (UV+ozono)	OPTIONAL	OPTIONAL	OPTIONAL
Sistema di purificazione UV	OPTIONAL	OPTIONAL	OPTIONAL
4 Luce led bianca	●	●	●
4 Chromolight	OPTIONAL	OPTIONAL	OPTIONAL
Poggiatesta	OPTIONAL	OPTIONAL	OPTIONAL
Sistema audio integrato + bluetooth	OPTIONAL	OPTIONAL	OPTIONAL
Modulo Wi-Fi	OPTIONAL	OPTIONAL	OPTIONAL
Pompa a doppia velocità	●	●	●
Skimmer filtro acqua	●	●	●
Riscaldatore 2 kW	●	●	●
Scambiatore di calore	OPTIONAL	OPTIONAL	OPTIONAL
Riempimento automatico	OPTIONAL	OPTIONAL	OPTIONAL

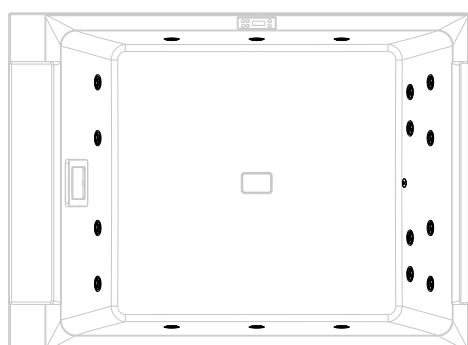
MODULO WI-FI	
Codice	Prezzo
DOMOWF	

KIT COIBENTAZIONE FONDO VASCA	
Codice	Prezzo
DOTHCOFV	

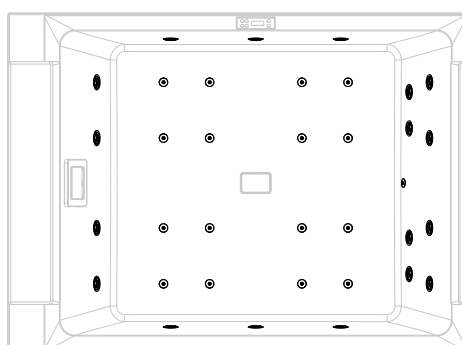
KIT COIBENDAZIONE PANNELLI	
Codice	Prezzo
KBT2F2LDOM	

COPERTURA TERMICA			
Coibentazione	Codice	Prezzo	
		C1	C2
		Plenty Grey	Brown
Copertura Estiva	DOTHCO-		
Copertura Invernale	DOTHCOT-		

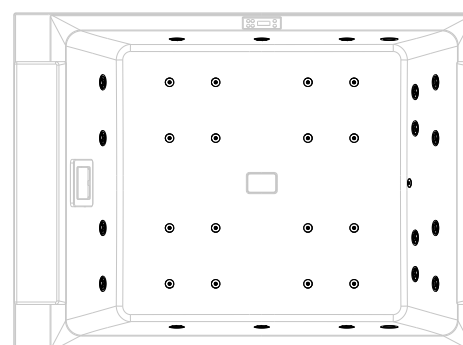
VERSIONE **STANDARD**

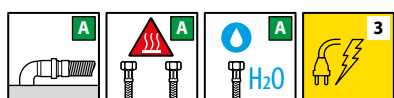
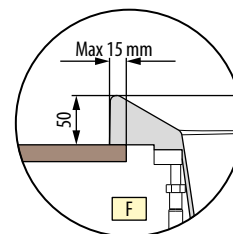
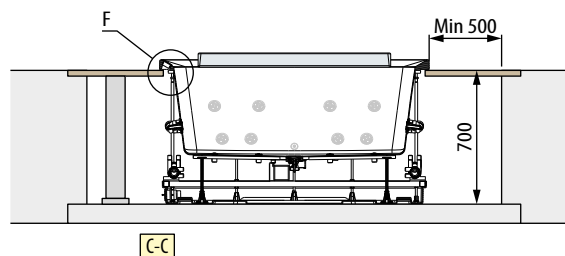
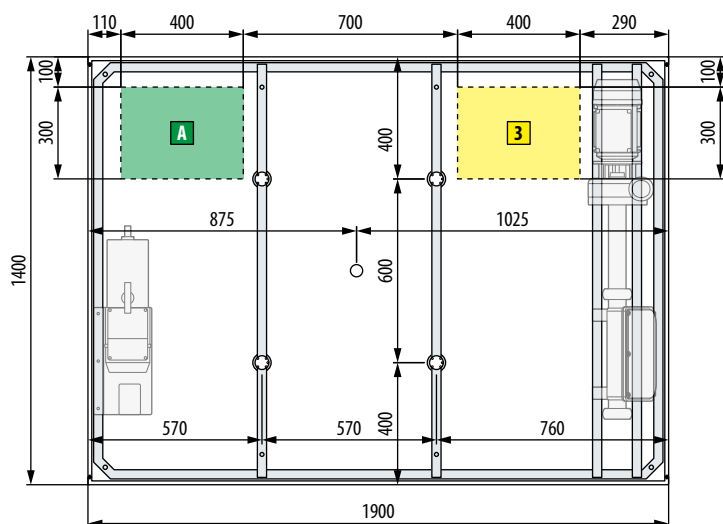
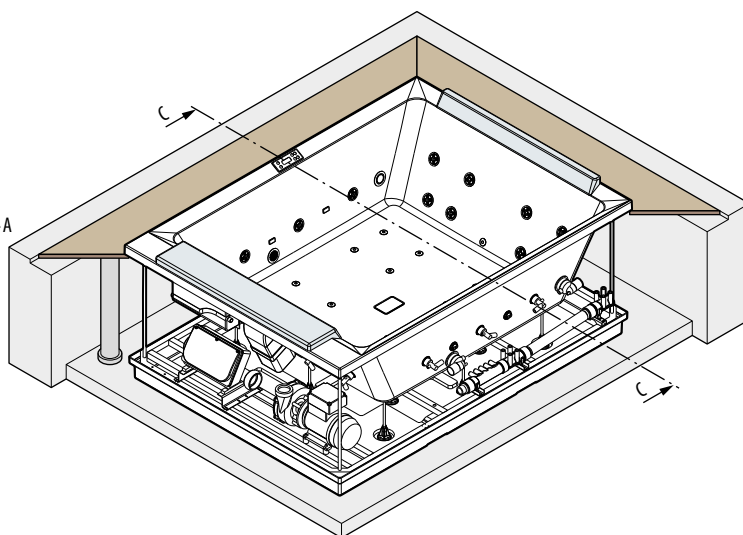
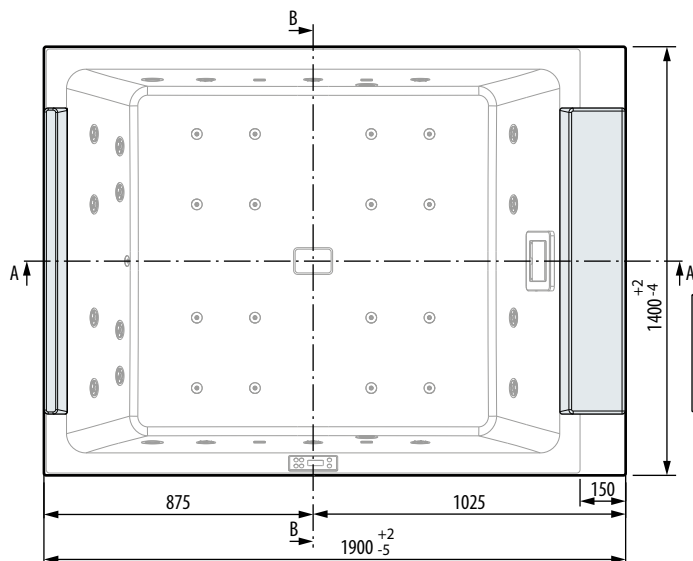
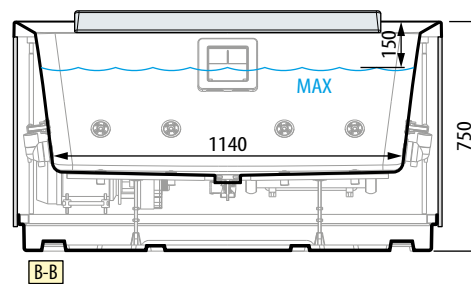
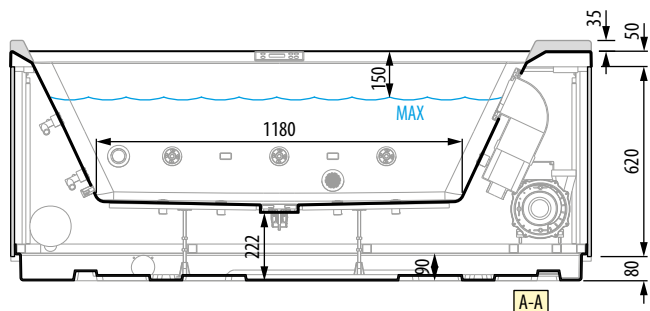


VERSIONE **PLUS**



VERSIONE **PLUS+NATURAL AIR**





CARATTERISTICHE IDRAULICHE

capienza massima 550 lt
 18 bocchette whirlpool laterali (18 vers. st.)
 16 bocchette mini jet sul fondo (0 vers. st.)
 2 bocchette Natural Air

CARATTERISTICHE ELETTRICHE

Tensione 230 V
 Frequenza 50 Hz
 Potenza max assorbita riscaldatore
 + pompa bassa velocità: 2400 W

CARATTERISTICHE MECCANICHE

Area totale 2.66 m²
 Peso totale: 960 kg
 Peso vasca+componenti 250 kg
 Peso utilizzatori (2 pers.) 80+80 kg
 Carico specifico su base di appoggio
 3610 N/m²